

Studies on Impact of Hydrogen on Materials – IOC R&D Capabilities



**Pipeline and Corrosion Research Department
Indian Oil R&D Centre,
Faridabad**

Damage Mechanisms of Hydrogen in Metals

- Nascent 'H' diffuses into steel due to its atomic size, solubility and diffusivity
- Trapped at dislocations, point defects, grain boundaries, voids, precipitate-matrix interfaces
- **High Temperature Hydrogen Attack** – reaction of trapped hydrogen with carbides leading to fissures
- At low and high temperature, entrapped hydrogen recombines at heterogeneities leading to swelling / **Blistering**
- Dissolved hydrogen migrates to triaxial stress sites causing time dependant static fatigue
- Dissolved hydrogen causes matrix **Hydrogen Embrittlement**
- Retardation of plastic deformation by locking of dislocation by trapped hydrogen

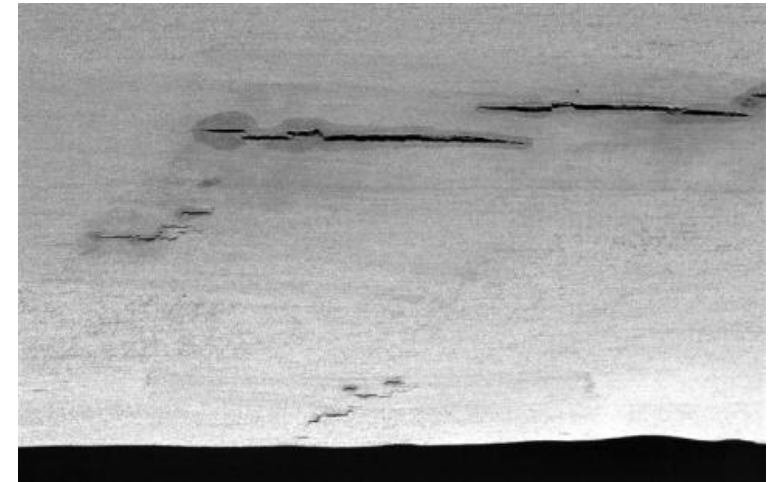
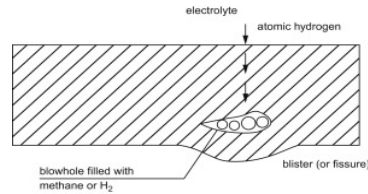
Damage Mechanisms of H₂ in metals

Low Temperature

- Hydrogen Blistering
- Hydrogen Embrittlement
- Hydrogen Stress Assisted cracking
- Tolerant to lower levels of H₂

High Temperature

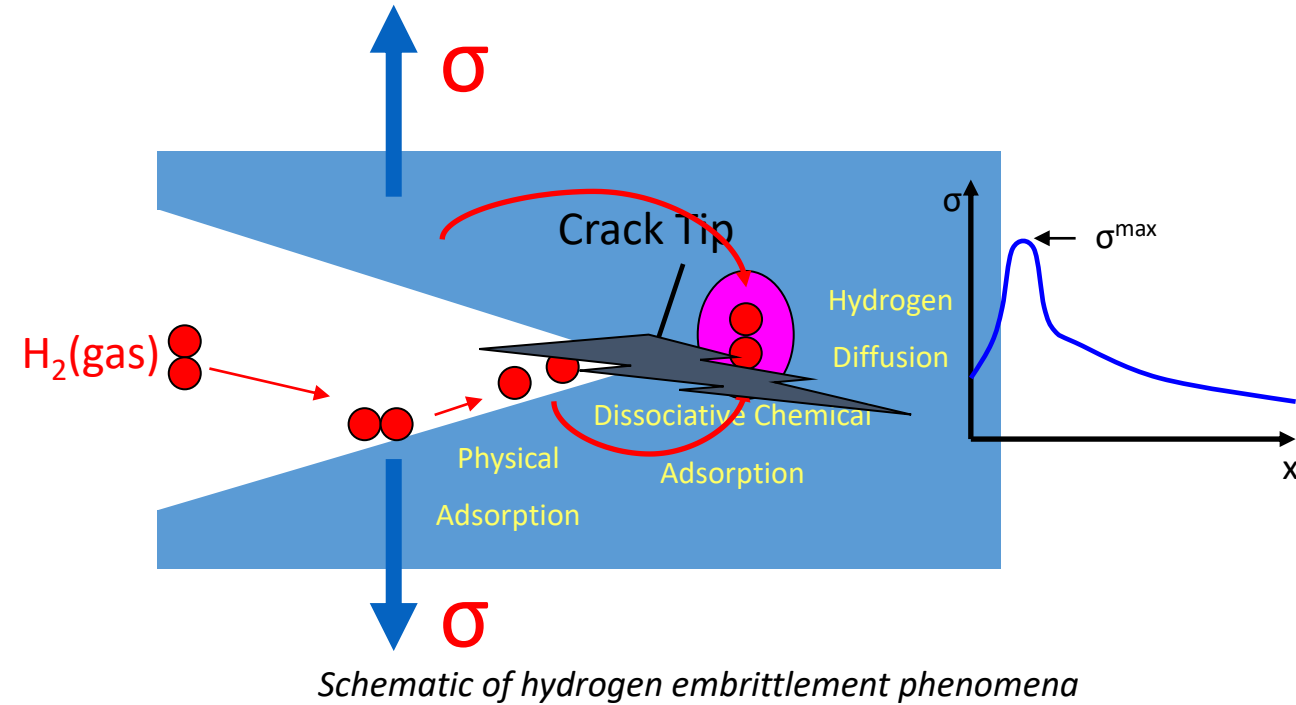
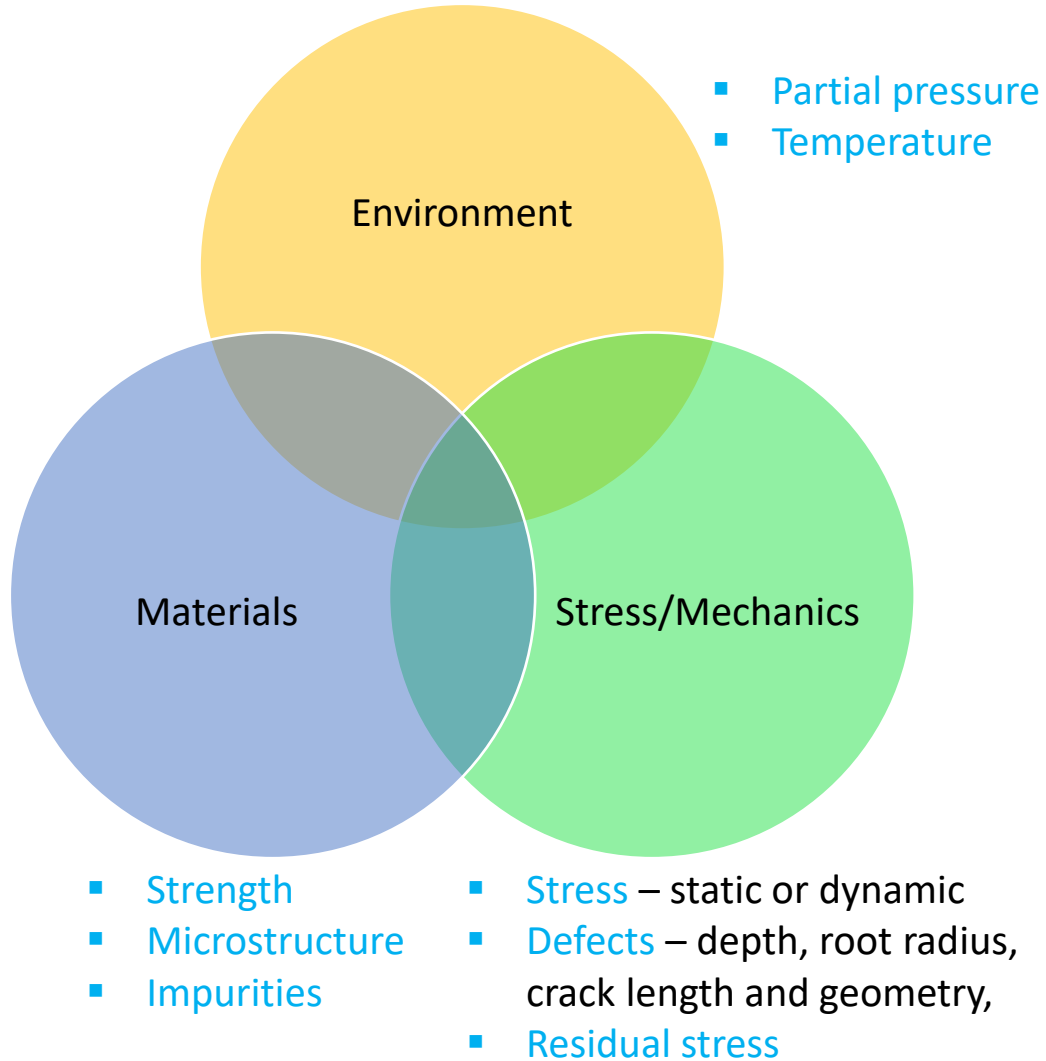
- High Temperature hydrogen attack (HTHA)
- Tolerance to higher levels of H₂



Hydrogen Blistering in Line pipe due to wet H₂S Corrosion

Low temperature H₂ damage in Transportation Pipelines

Interplay of three variables

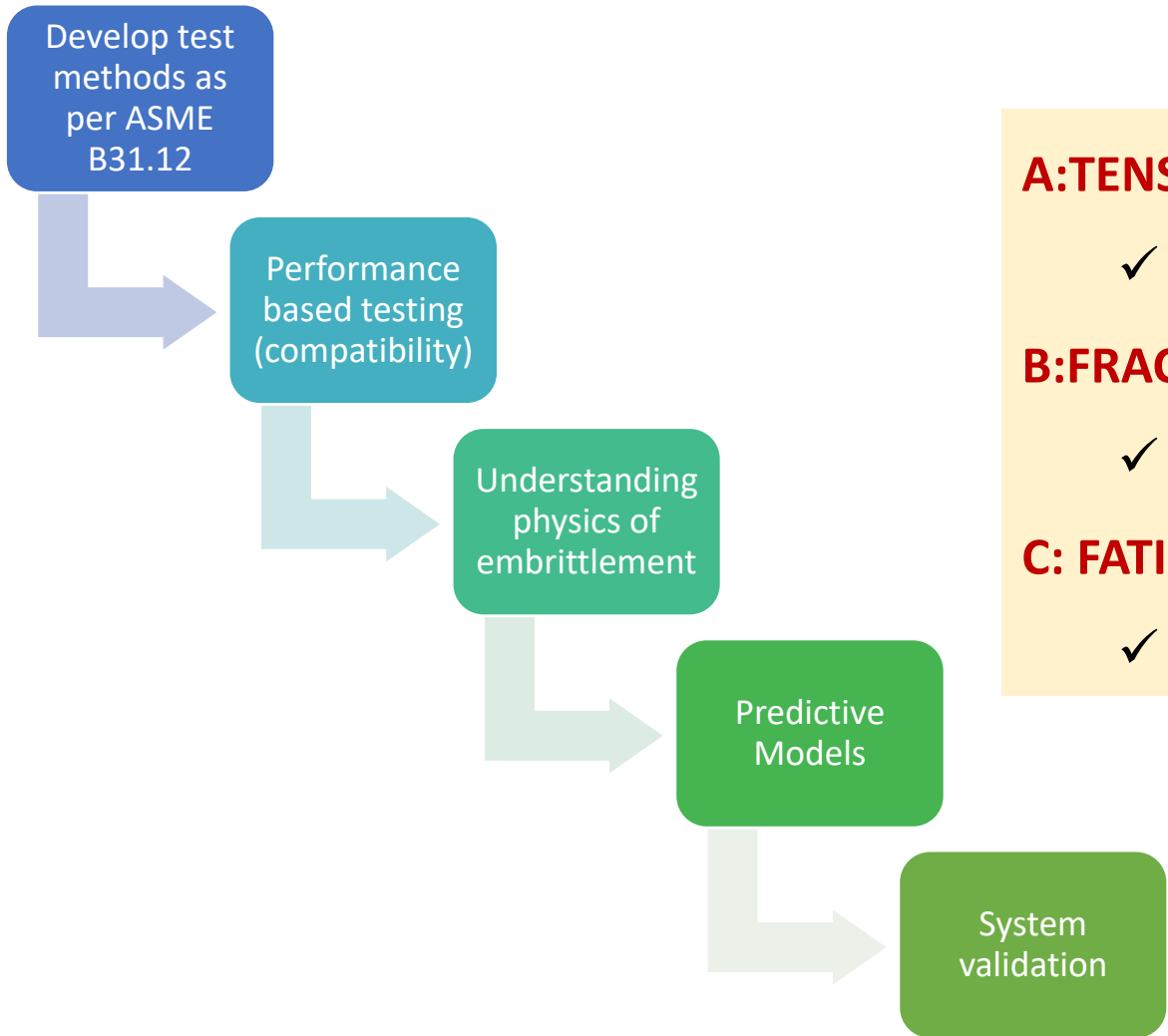


Factors affecting the entrainment of hydrogen

- T, P, k (kinetics driven by T, P and other catalytic activity)
- Solubility and Diffusivity
- Microstructures (Normalised; Q&T)
- Composition & Phases

Methodology for evaluation of in-service pipelines

ASME B31.12 – Rules for hydrogen pipelines with reference to
ASME BPVC Section VIII, Div. 3, Article KD-10



A:TENSILE DEFORMATION & FRACTURE BEHAVIOR

- ✓ Strain rate dependence & Notch sensitivity

B:FRACTURE RESISTANCE

- ✓ Fracture Mechanics based analysis – J_{IC} , J_{IH} , J-R curve

C: FATIGUE RESISTANCE

- ✓ Fatigue Crack Growth Rates – (da/dN)

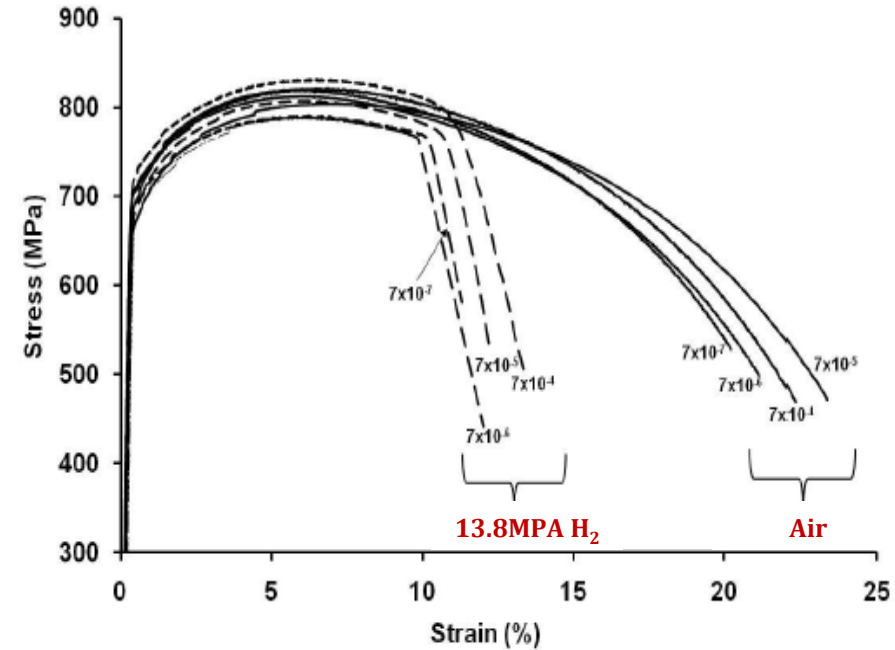
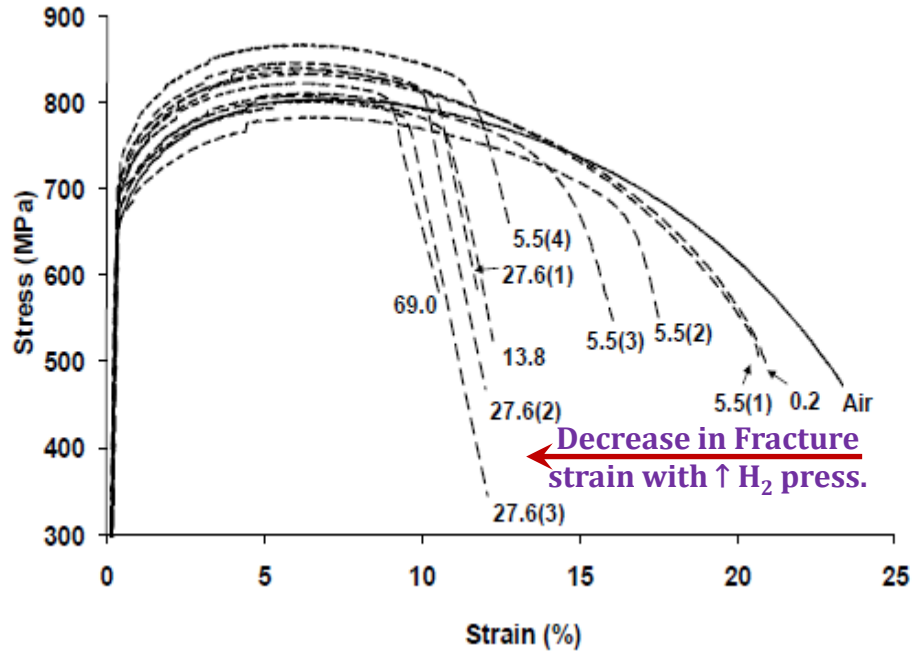
Structure integrity tool for quantitative risk assessment

– predictive models

Development of Indigenous Regulatory standards for

Repurposing

Tensile Deformation & Fracture



International Journal of Hydrogen Energy, Vol.59, Nicholas Nanninga et al, NIST, 2012

Tensile Test X100 steel tested in hydrogen at different gas pressures (Strain rate - 7×10^{-5} /s)

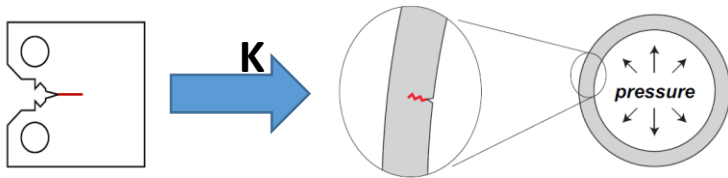
- ✓ Notch sensitivity & Strain rate sensitivity of Tensile properties to Hydrogen
 - Increasing H₂ pressure significant vs. Increasing strain rate
- ✓ Revised of properties for consideration in Design revision

Fracture Resistance

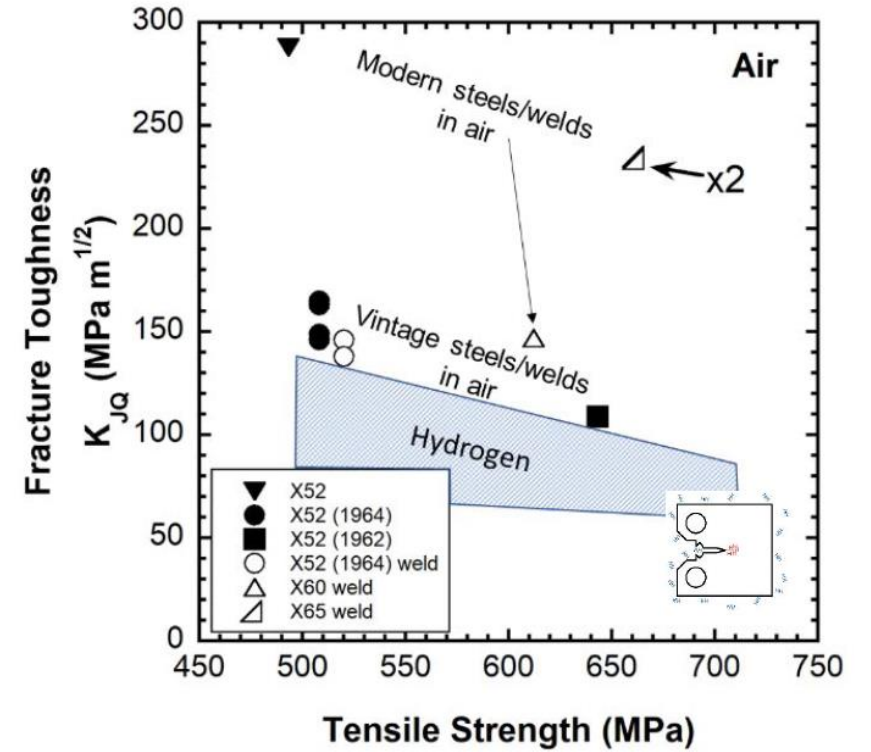
- ❖ *Fracture Toughness* (K_{IC}) – the most critical parameter for evaluation of the pipe grade steels
- ❖ Dependant on Defect geometry & Strength (UTS) of the Pipeline grade
- ❖ Fracture resistance behavior of welds vs parent metal
 - ✓ *Residual stress, Local hard spots (HAZ) & Local microstructural inhomogeneity*

Stress Intensity Factor, K

- K – defines stress state of crack
- $K = \sigma \sqrt{\pi a} \times f(\text{geometry})$
- $\sigma = \text{Stress}$; $a = \text{Crack size}$

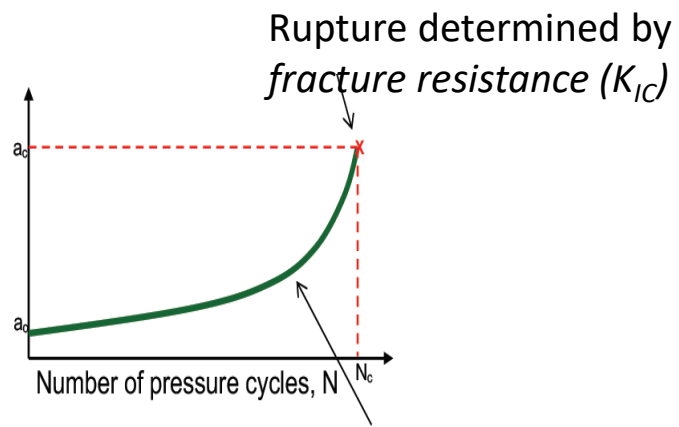
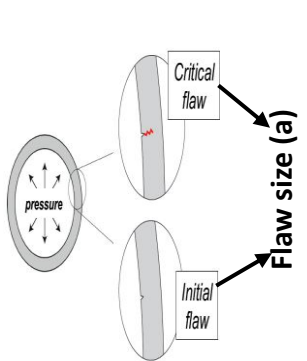


Higher the strength Lower the Fracture Toughness

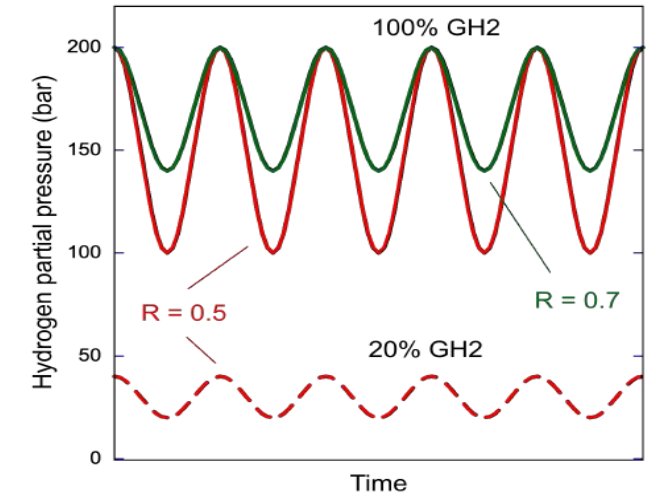
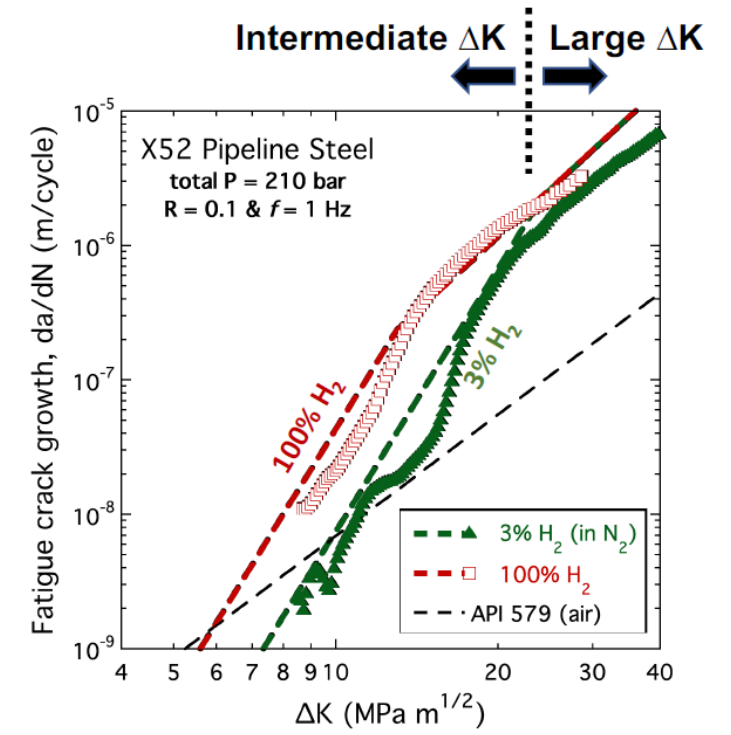
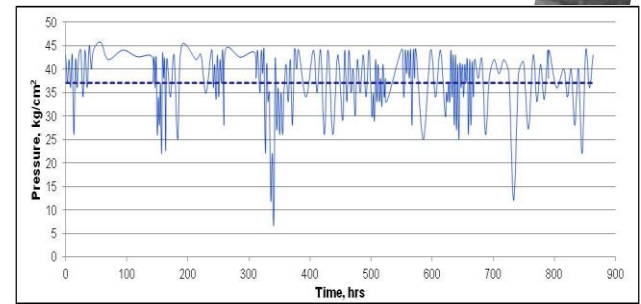
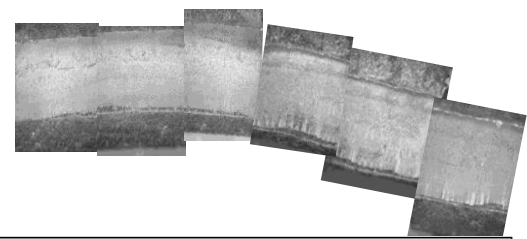


Fatigue resistance

- ❖ *Fatigue Crack Growth Rate* – Critical parameter in pipeline operations
- ❖ Pressure cycling induces fatigue
- ❖ Partial pressure of hydrogen affects FCGR
- ❖ Hydrogen effects not seen under large ΔK



Evolution of flaw size determined by *Fatigue crack growth* (ΔK - da/dN data)



Ref.: San Marchi et al, PVP2021-62045

Uniqueness of Pipeline Transportation systems

- Compositional Tolerances within the specified grade
- Steel making and Pipe manufacturing processes
- Design and construction practices
- Workmanship & Quality control during fabrication
- Defect acceptance limits and the NDT adopted
- Operational aspects : Max.pressure , pressure cycles, temperature, fluid type etc.
- In-service stresses , damages, defects, repair techniques

Case to case assessment required for alteration of service

Simulated Hydrogen charging - Challenges

Offline Charging

- ❖ Electrochemical Charging
 - ✓ Large surface conc.; Skin effect; Inhomogeneous
- ❖ Autoclave / Reactor based exposure test
 - ✓ At actual Op. conditions; Saturation with time
- ❖ Retention of charged hydrogen over test period of few hours to Months



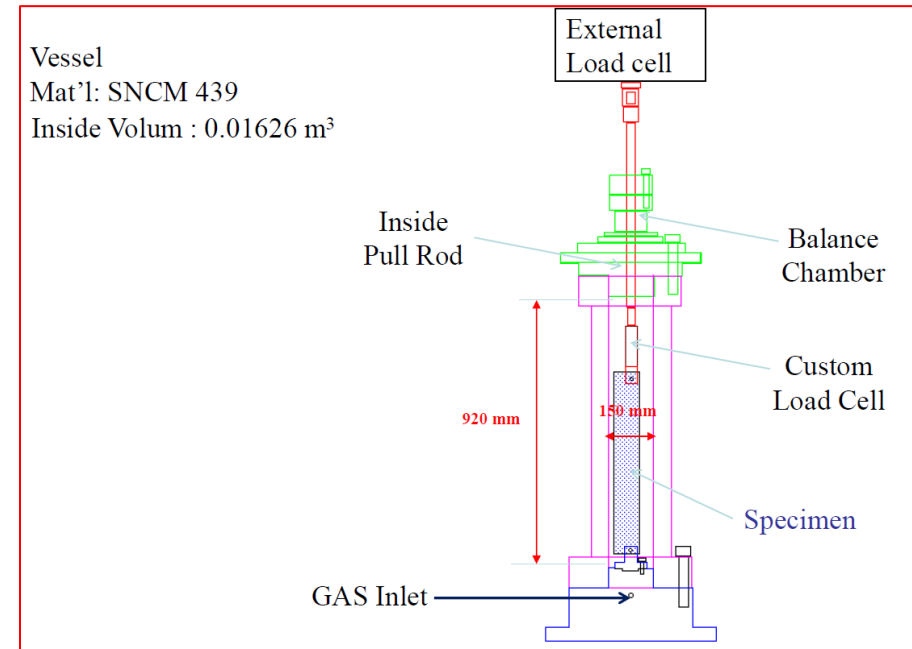
Pilot Plant Reactor



Autoclave

Online Charging

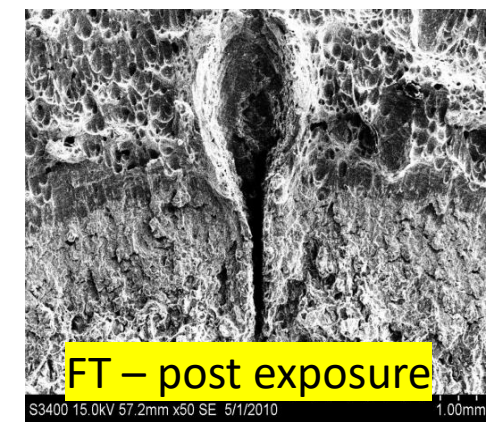
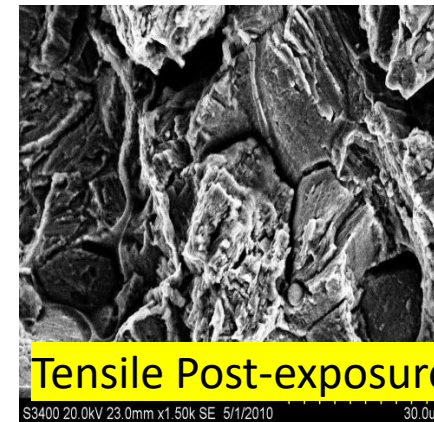
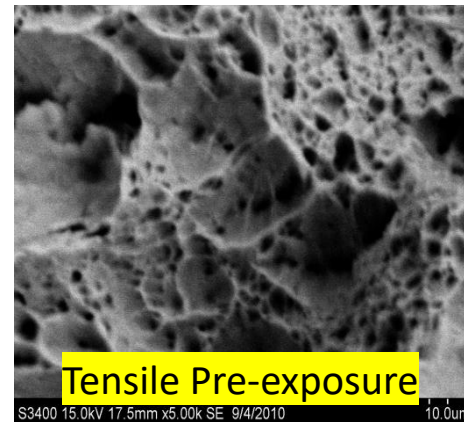
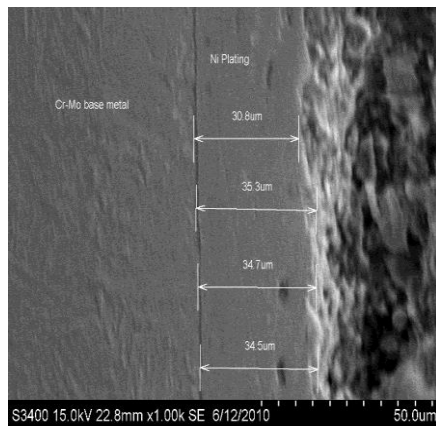
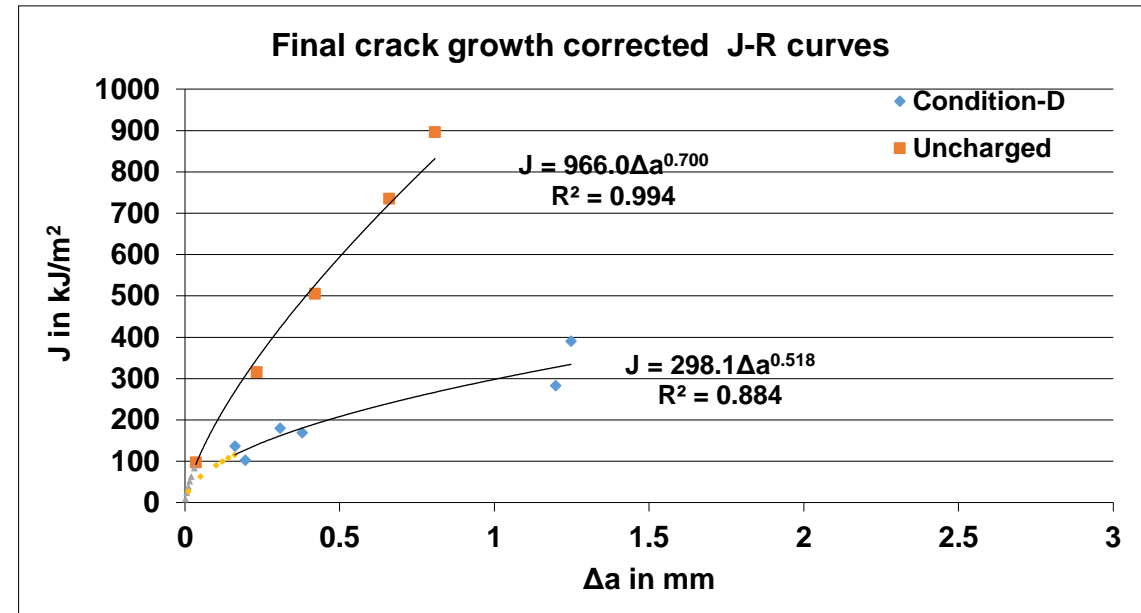
- ❖ Evaluation of property under active charging
 - Fatigue Crack Growth Rate Tests (1-2 Months)
 - SSRT (Slow strain rate test) 10^{-4} to 10^{-6} / s capability



SSRT cum Fatigue testing with online H₂ Charging

Past Studies at R&D on Cr-Mo steels of Refinery Reactor

- 2.25Cr1Mo plate charged with Hydrogen in Pilot plant reactor at 475°C & 220 kg/cm²
- Bulk hydrogen of 15ppm post exposure
- Tensile & Fracture toughness evaluation done



R&D Initiatives For Pipeline Grade steels

- ✓ Study on weldments of service exposed Pipelines
 - ❖ Theoretical determination of H₂ concentration in Pipeline steel using empirical equations
 - ❖ Finite Element Modelling for local stress field evaluation at various operating pressure
 - ❖ Micro-structural characterization
 - ❖ Autoclave Exposure in 18%, 36%, 50% (v/v) H₂ blends in CNG and 100% H₂ @ 35 kg/cm²
 - ❖ Slow Strain Rate Tensile testing

Estimation of [H] concentration

Permeability, Diffusivity and Solubility

- Affected by carbon content and microstructure
- Exponentially varies with temperature – Arrhenius relation

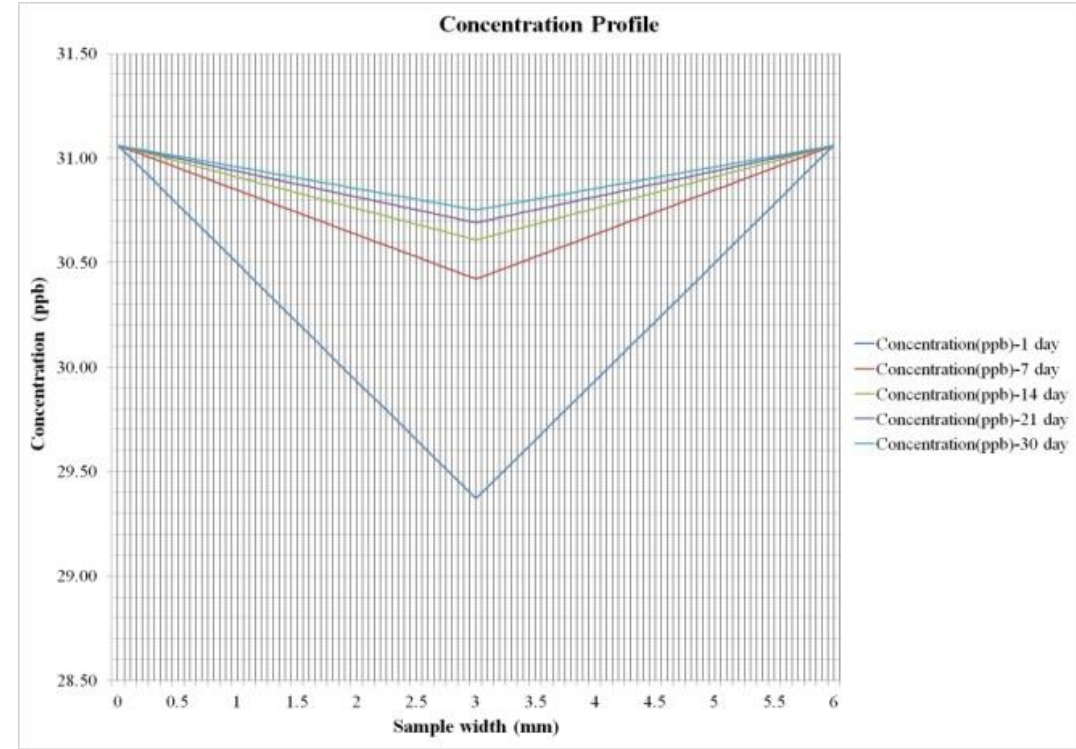
Solubility as per Sieverts Law

$$[H] = K [pH_2]^{0.5}$$

Diffusivity as per Fick's' Law

$$D = D_0 * e^{(-k/T)} \quad k = Ea/R$$

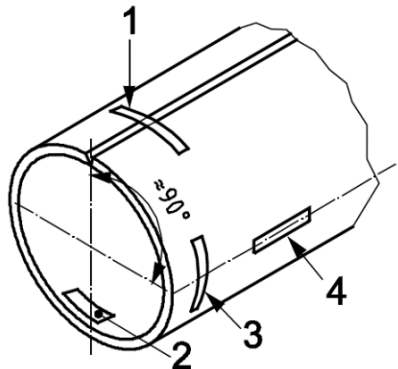
$$D \text{ (Diffusivity of } H_2) = 1.12e-8 \text{ m}^2/\text{s @ Room Temp.}$$



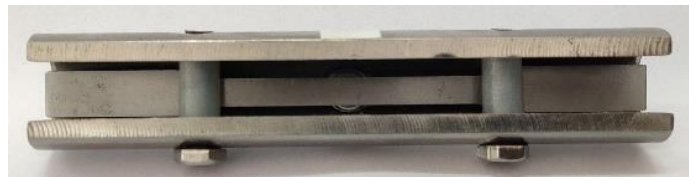
Maximum solubility of [H] in lattice API X65 and API X70 steels for a 6 mm by 3 mm sample exposed to 18% v/v H₂

Concentration (ppb)		1-day	7-days	14-days	21-days	30-days
Surface (0 mm)	API X65	31.06	31.06	31.06	31.06	31.06
	API X70	31.06	31.06	31.06	31.06	31.06
Mid (3 mm)	API X65	28.89	30.24	30.48	30.58	30.66
	API X70	29.37	30.42	30.61	30.69	30.75

Pre-stressed Three Point Bend samples



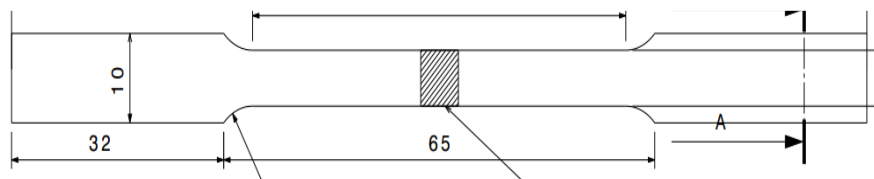
Weld sample as per API 5L Spec.



Three point bent beam fixture

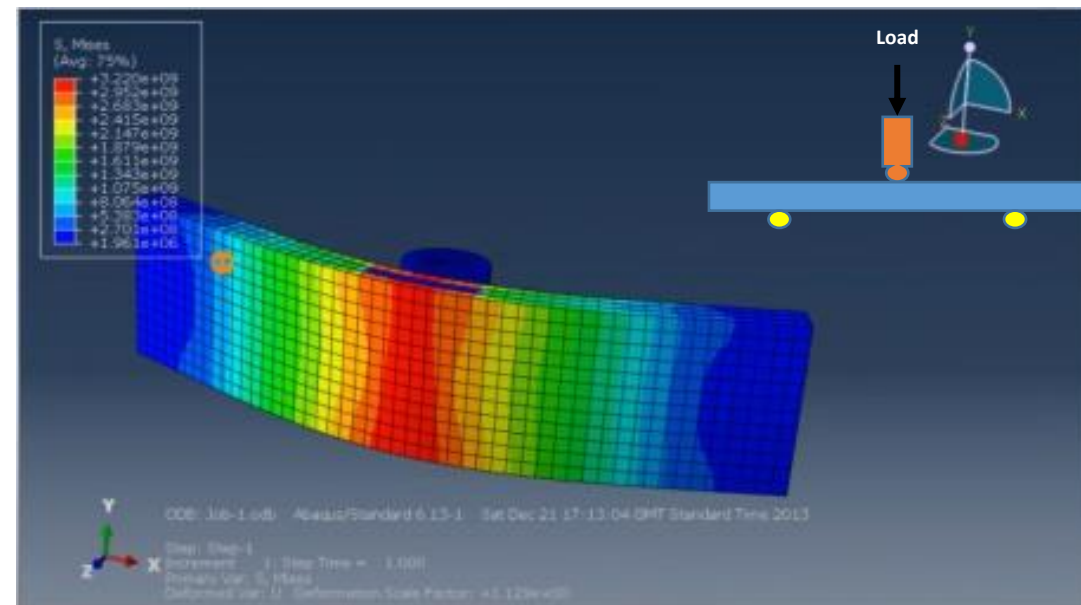


Deflection measurement with LVDT



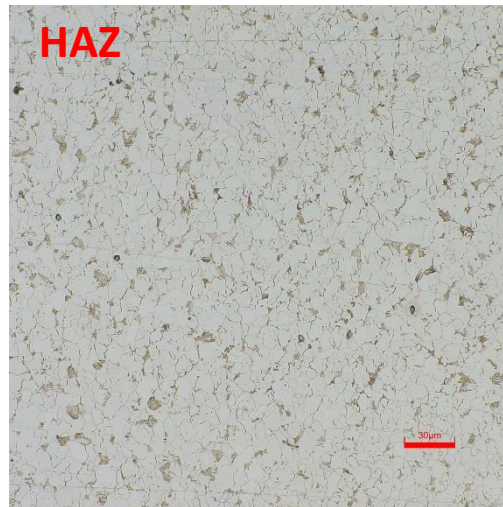
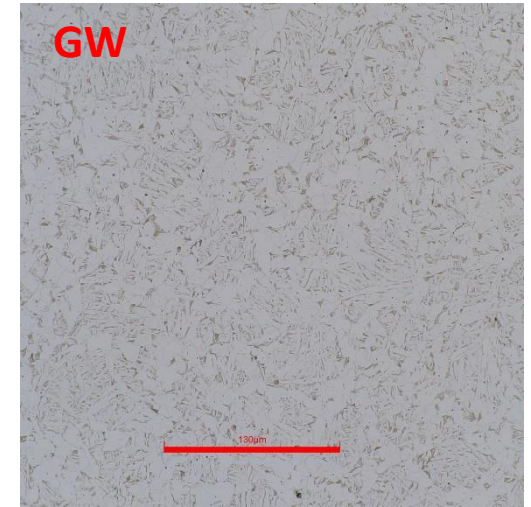
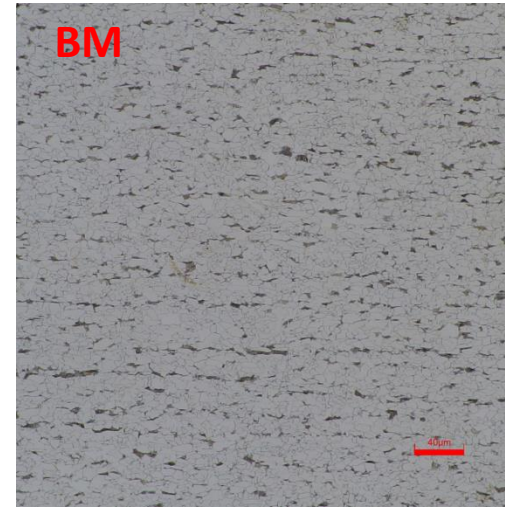
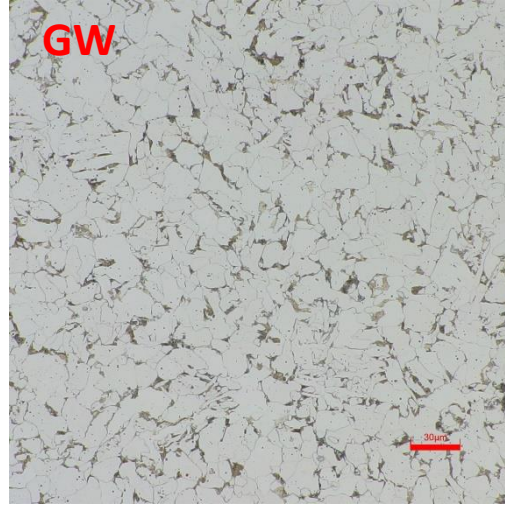
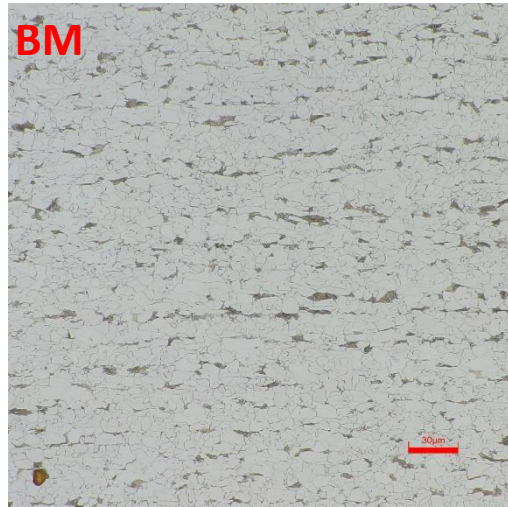
- Prestressed Three Point Bend specimens considered
- Deflection generates bending tensile stress **equivalent to Hoop stress**
- Deflection estimated at MAOP (72% SMYS)

- ❖ Samples extracted from weldments of service exposed API X65 & X70 as per API 5L
- ❖ Subsize tensile samples were fabricated as per ASTM E8
- ❖ Subjected to stress using a bent beam fixture at MAOP
- ❖ Post exposure, tensile property evaluated



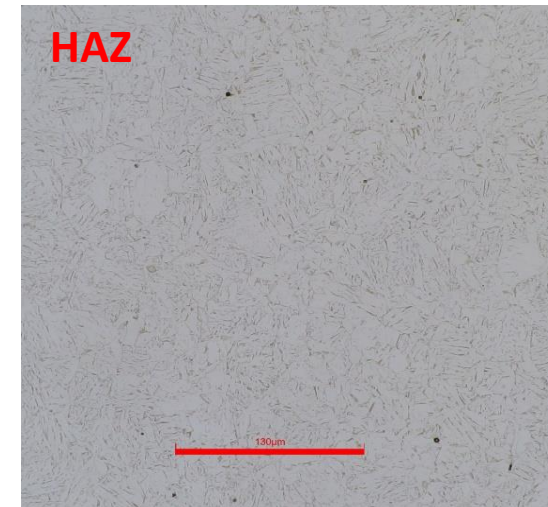
FEM based Applied Stress vs. Deflection plots

Microstructural Characterization



Base Metal = Banded Pearlite + Ferrite Microstructure

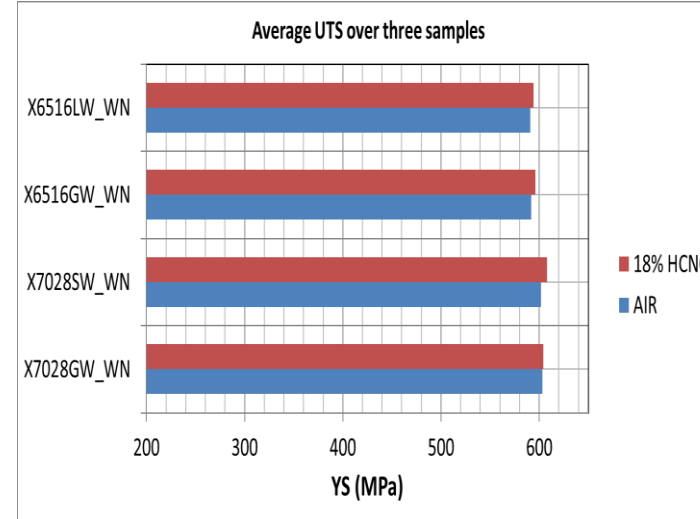
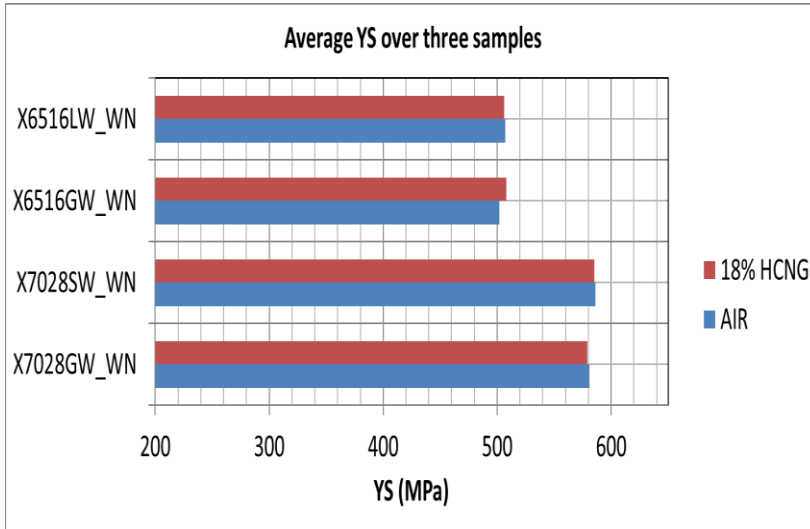
HAZ and Weld = Elongated Grain + Widmanstätten ferrite



API X65 – BM, HAZ, GW
@ 720 X

API X70 – BM, HAZ, GW
@ 720 X

Tensile Test Data (Normal strain rate)

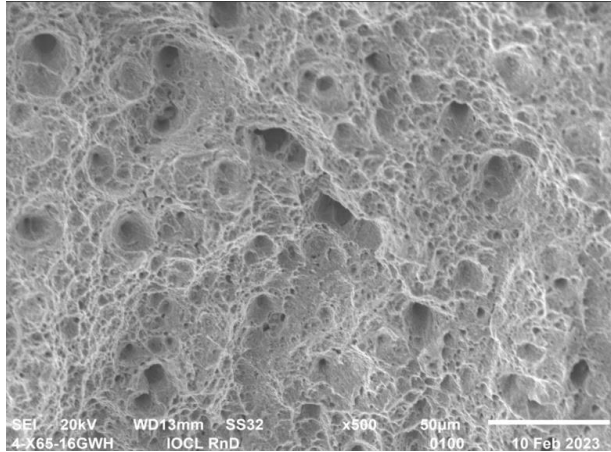


No significant degradation of YS & UTS in weld samples – At Normal strain rate without Notch

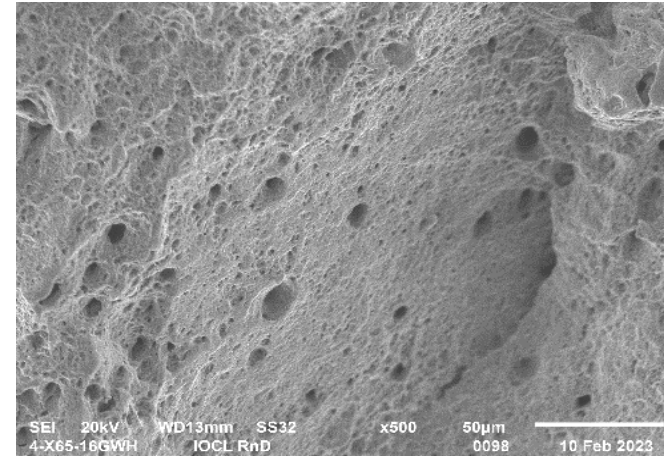
Steel	Test Environment	Yield Strength (MPa)	Ultimate Tensile strength (MPa)
API X65	Air	503	594
	@ 35 kg/cm ² 18% HCNG	508	591
API X70	Air	586	606
	@ 35 kg/cm ² 18% HCNG	558	612

No significant degradation of YS & UTS in base metal – At Normal strain rate without Notch

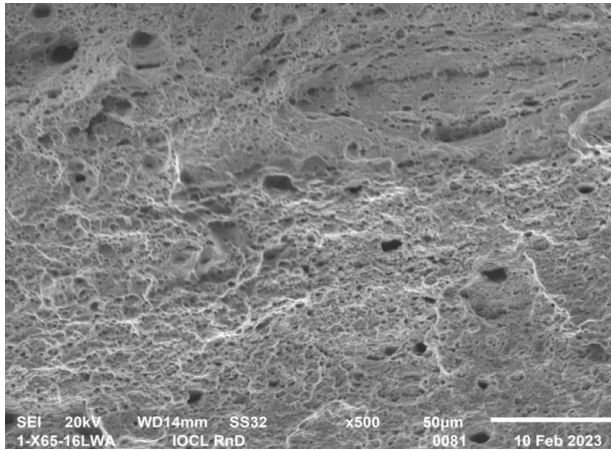
Fractograph of Normal tensile samples



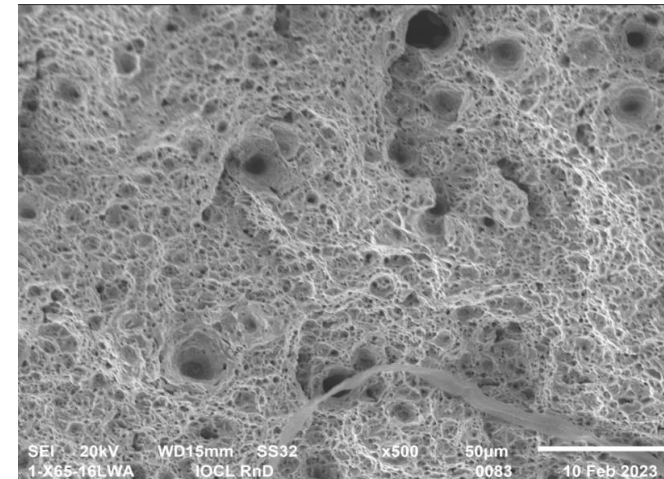
API X65 weld Before Exposure



API X65 weld after Exposure



API X70 weld Before Exposure

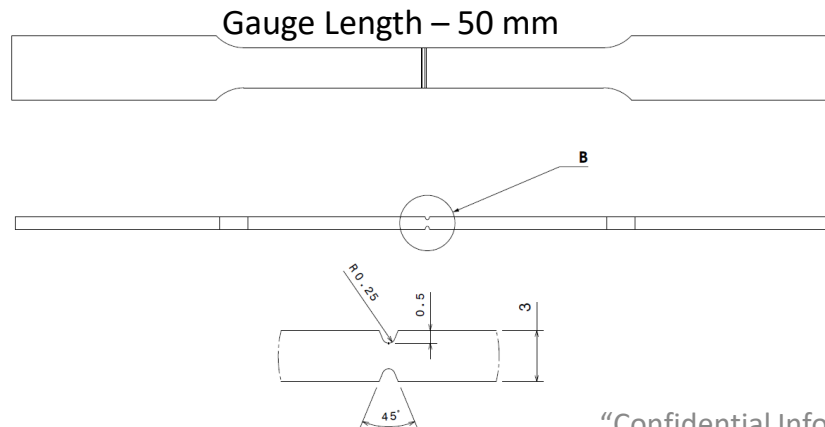
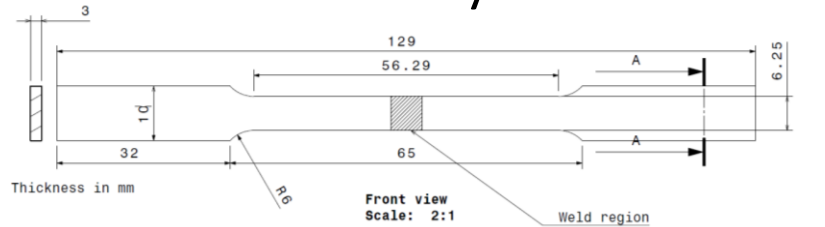


API X70 weld after Exposure

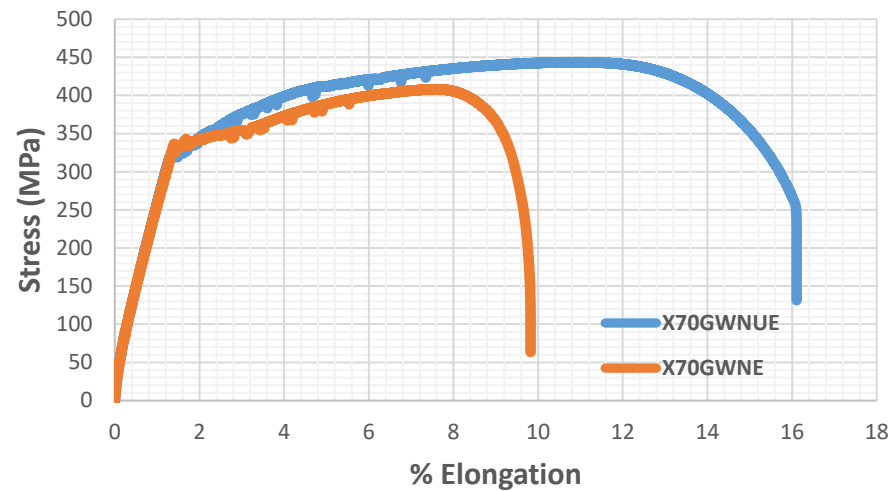
Predominantly Dimple with few cleavage facets indicating ductile failure

Notched Slow Strain Rate Tensile tests

- ❖ Notch induces Stress triaxiality
- ❖ Stress induced diffusion of H during charging
- ❖ Autoclave charging at 18% HCNG conditions @ 35 kg/cm²
- ❖ Diffusion of mobile H₂ to triaxial points
- ❖ Properties indicate Notch sensitivity & material behavior with linear defects

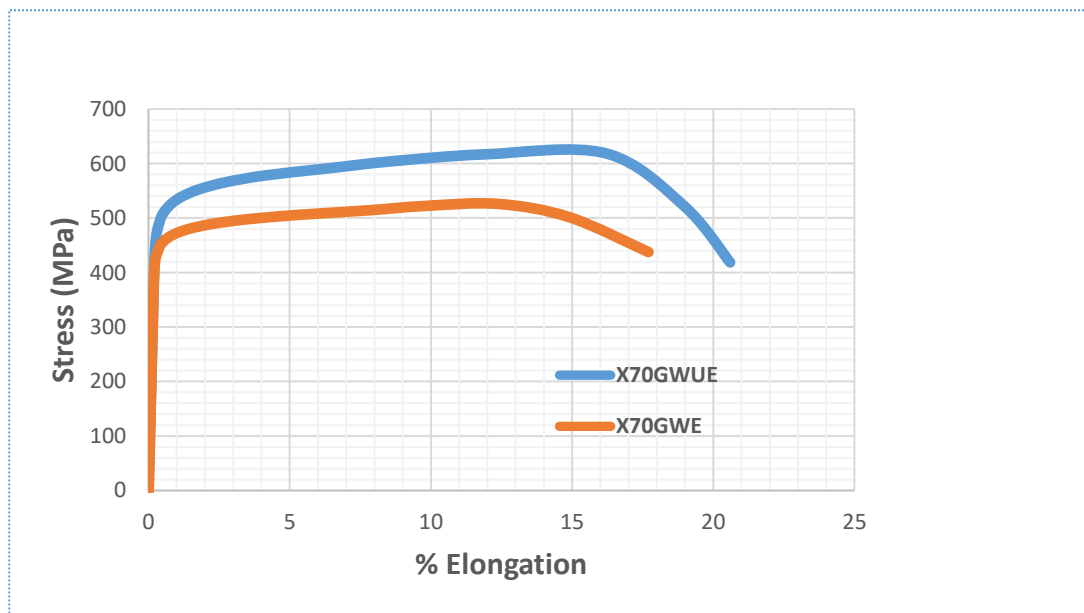


Slow Strain Rate Test equipment



X70 Notched weld specimen tested at $3 \cdot 10^{-6} \text{ s}^{-1}$

UE - Unexposed
 E - Exposed
 GW - Girth weld

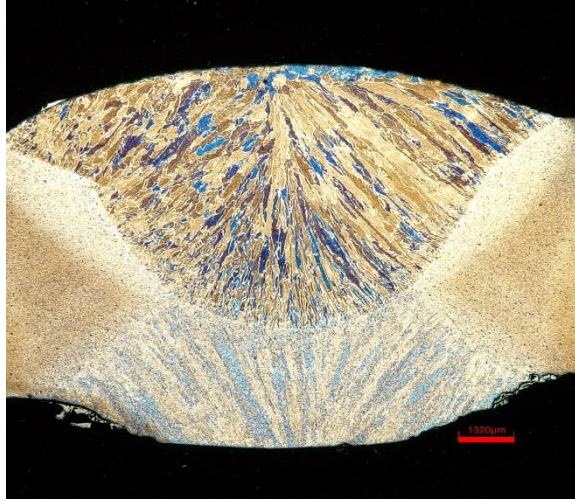


X70 Notched weld specimen tested at Normal speed



X70 Charged sample failed at notch region

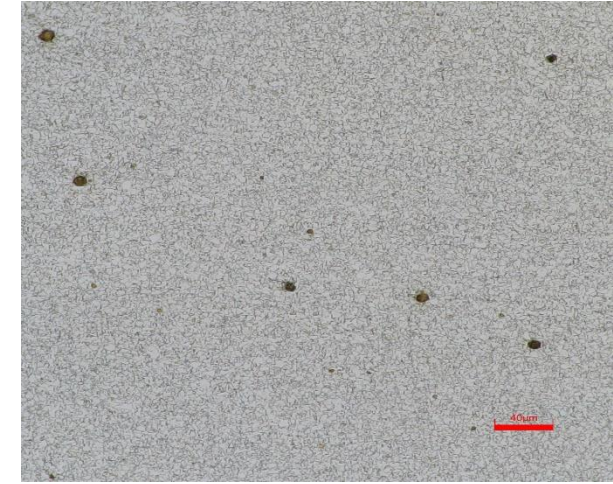
Sectional Microstructure Pre & Post failure – X70



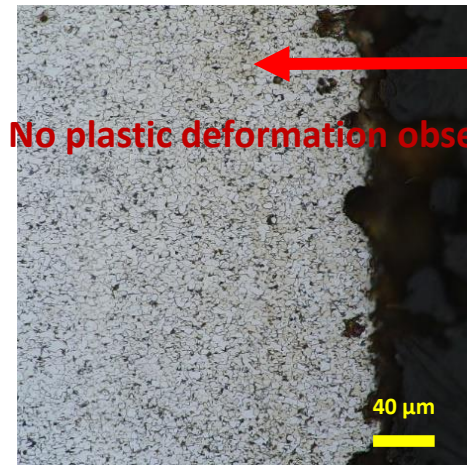
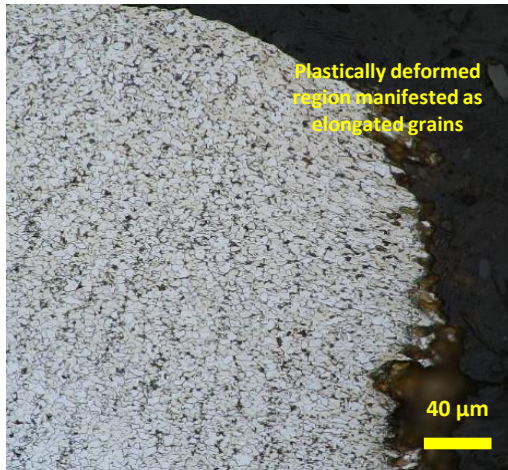
X70 Weld cross section



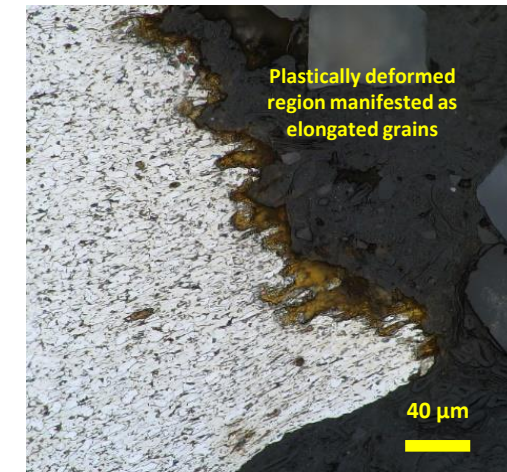
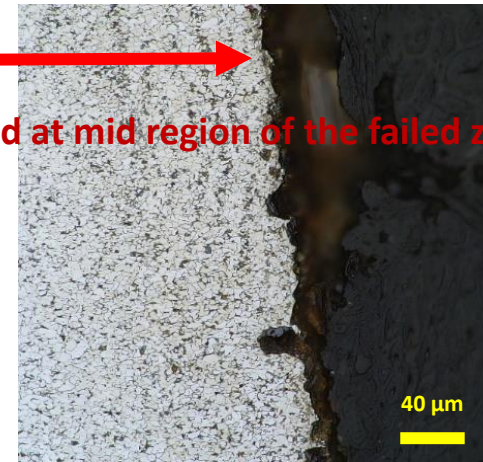
X70 HAZ



X70 Base metal

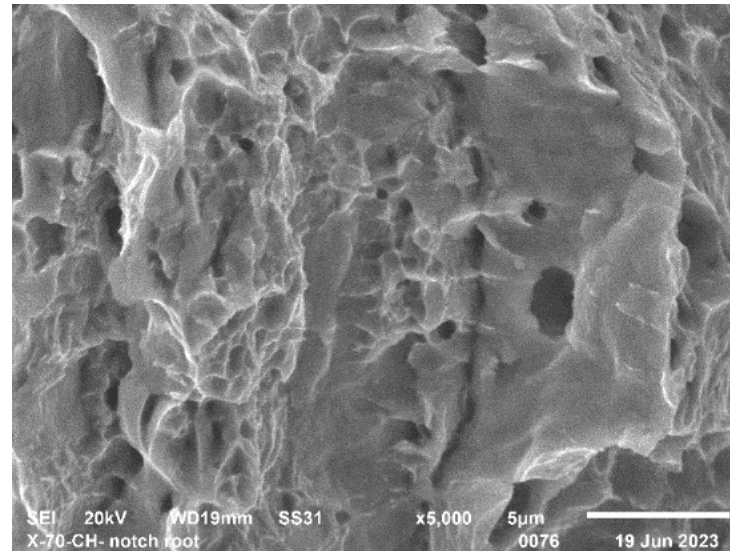
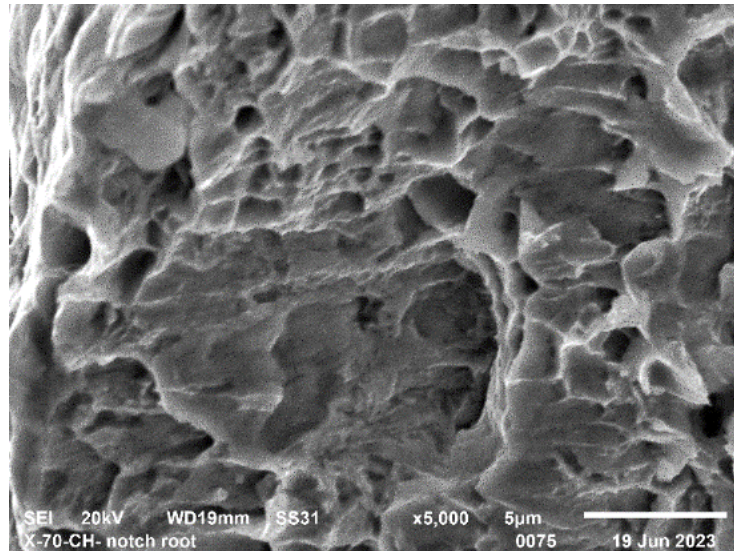


No plastic deformation observed at mid region of the failed zone



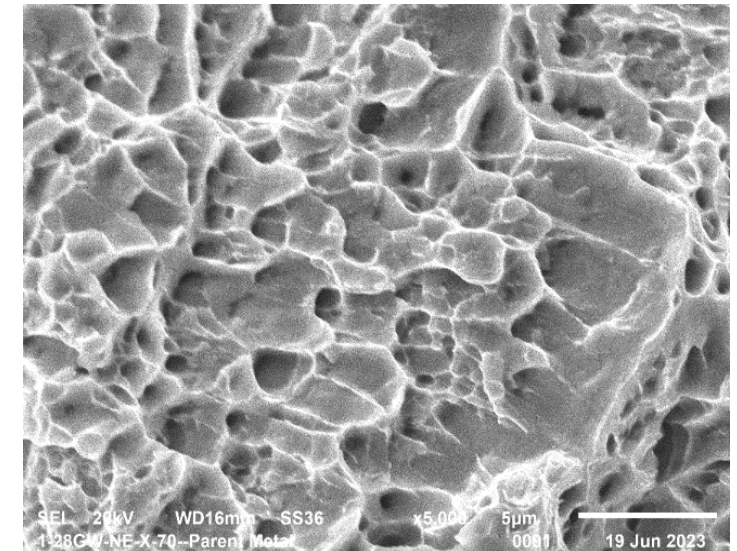
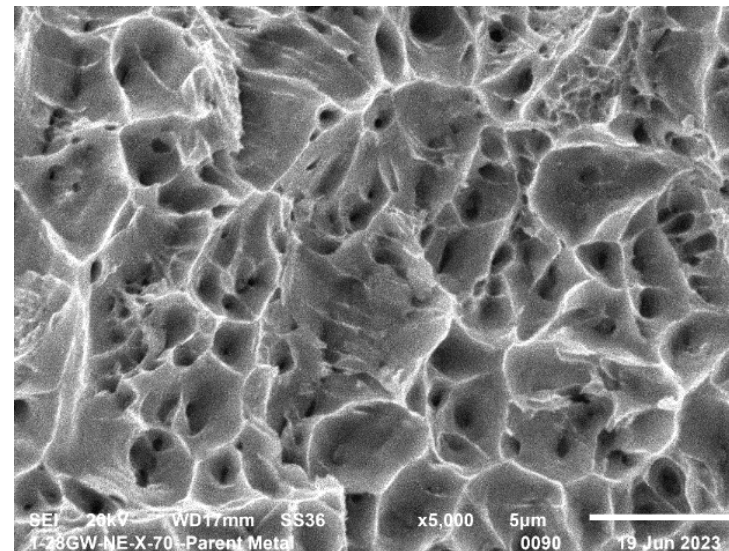
Microstructure of failed region of exposed samples of API X70 girth weld – 720X

SEM Fractograph of X70 steel welds post SSRT



H₂ Charged sample - Notched region showing a mixed mode (Ductile dimple & cleavage) fracture

Uncharged sample - Notched region showing a ductile dimple fracture



Work in Progress

- ❖ Slow Strain Rate Testing (Tensile & Fracture Toughness)
 - ✓ Samples with v-shaped notch
 - ✓ Three-point bend tests for Fracture toughness
 - ✓ Effect of blend composition on Fracture toughness
- ❖ Fatigue Crack Growth Rate Test
 - ✓ Samples with fatigue pre-crack
 - ✓ Effect of load ratio, load cycle frequency, load cycle duration with hydrogen s composition on fatigue crack growth rate
- ❖ Studies to be conducted under 36%, 50% v/v H₂ in CNG and 100% H₂ for
 - ✓ X52, X65, X70 API 5L PSL2 grades and their different types of weldments
- ❖ Generation of database of properties for all grades for compatibility for H₂ transportation
 - ✓ Defect criticality , Max. Allowable Operating conditions

Way Forward...

- “Joint Industry Program” on Repurposing of in-service Pipelines for Transportation of Hydrogen blends from all grades
 - ✓ Research labs & Academic Institutes
 - ✓ Pipeline Operators
 - ✓ Manufacturers of steel / pipe / pipe components / others
 - ✓ Round robin tests at various laboratories
- Frame guidelines on Fitness For Purpose, Integrity, Risk assessment, Repair procedures, Inspection practices etc.
- Development of suitable NDT techniques to detect the allowable sizes of defects under Hydrogen service

TEAM MEMBERS

Sh. Mukti Ranjan Mahapatra

Sh. Santosh Kumar AR

Sh. Amir Q M

Dr. Kannan Chandrasekaran

Dr. Ramakumar SSV

Thank you

